



ASPENRIDGE®

AVANTE *GARDE* LIVING IN MARKHAM



ASPENRIDGE®

TABLE *OF* CONTENTS

- 06 ASPIRE WITH ASPEN RIDGE
- 08 THE ASPEN RIDGE DIFFERENCE
- 10 A DESIRE FOR DESIGN
- 15 COMMUNITIES OF DISTINCTION
- 16 ASPEN'S AREA SUCCESSES
- 18 CURRENT ASPEN RIDGE COMMUNITIES
- 32 VIBRANT LUXURY LIVING BLOOMS IN MARKHAM
- 42 MULTIPLICITY OF CHOICE
- 44 MARKHAM'S MAGIC
- 46 SCHOOLS OF THOUGHT
- 48 COMMUNITY FEEL
- 50 MAKING THE CONNECTION
- 52 PEAK PARK EXPERIENCES
- 56 GOLFER'S PARADISE
- 59 SHOPPING SPREE
- 62 A FLOWERING OF CULTURE



*ASPIRE WITH
ASPENRIDGE*

VICTORIA GRAND IN MARKHAM 6

30 YEARS OF MOVING UP

WITH MORE THAN 30 YEARS OF EXPERIENCE, THE FOUNDING FAMILY AND COLLEAGUES AT ASPEN RIDGE HAVE BUILT A GENERATION OF HOMES THAT CONSISTENTLY REFLECT UNCOMPROMISING EXCELLENCE IN CRAFTSMANSHIP, QUALITY AND ATTENTIVE CUSTOMER CARE. THE CONTINUAL DRIVE TO EXCEED YOUR EXPECTATIONS MEANS ASPEN RIDGE UTILIZES THE LATEST TECHNOLOGICAL INNOVATIONS IN DESIGN AND CONSTRUCTION WHILE OFFERING A TRADITIONAL CUSTOMER-FIRST APPROACH.

7 ASPENRIDGE





THE ASPEN RIDGE DIFFERENCE

NEW SITE NEW FLOORPLANS

We do things differently at Aspen Ridge. Each new site of ours gets a whole new set of floorplans and elevations. We design only to the site and what the market needs and desires in that specific area. Perhaps it's a larger family room, home office capability or different closet configurations. Perhaps it's a sleek modern exterior in an area that has only seen traditional designs. Or it may be townhomes with bigger windowpanes, to flood interior spaces with abundant natural light.

UNIQUE DESIGNS FOR EACH COMMUNITY

From the beginning, we've never been a builder that's ever content to settle on an existing formula for home designs, perhaps adding an odd modification here or there. We continuously update our designs, and always re-examine changing lifestyles and what people want in their homes today.



INTERIOR DESIGNER INPUT

At Aspen Ridge, we invite respected interior designers to assess almost all of our plans. We task these experts to enhance the vision of our architects. We strive to always add extra dimensions of comfort and ease-of-living for every one of our homebuyers.

EVERYONE GETS A SAY

Finally, our home plans are subjected to numerous internal reviews across the different departments in Aspen Ridge — from architecture to sales, marketing, contracts and construction, plus feedback from our customers. Our process provides us with a current and fresh point-of-view. We put it all together, and you benefit — with up-to-the-minute plans that reflect what's really important to today's homebuyer.

A DESIRE FOR DESIGN

THE STUDIO AT ASPEN RIDGE



THE STUDIO

INSPIRATION MEETS INCREDIBLE SELECTION AT THE ASPEN RIDGE DESIGN STUDIO. THE 4,000-SQUARE-FOOT STUDIO HOSTS AN INSPIRING SELECTION OF PREMIUM DÉCOR, FEATURES AND FINISHES FOR HOMEOWNERS TO BEGIN CUSTOMIZING THEIR DREAM HOME. AS A VICTORIA GRAND PURCHASER, YOU WILL BE ABLE TO CHOOSE THE LATEST IN HIGH-STANDARD FINISHES TO COMPLEMENT YOUR PERSONAL STYLE AND AESTHETIC.

VISUALIZE YOUR DREAM HOME



With the help of professional design consultants, the Studio will work alongside you as you choose the final touches that will make your Victoria Grand house a home. Brand name products are showcased on a grand scale in realistic vignettes with interactive, immersive displays, allowing you to visualize how the ultimate kitchen or spa bathroom of your dreams will look.

The Kitchen Display features built in appliances and two islands; the Laundry Room offers a Doggy Wash, and the Bathroom Display features sleek glass shower enclosures. Featuring a wealth of choices in tile, countertops, flooring, and more, the design studio helps bring your vision to life.





COMMUNITIES *OF* DISTINCTION

THE ASPEN RIDGE PORTFOLIO

EVERY ASPEN RIDGE COMMUNITY HAS A DISTINCT IDENTITY, PERSONALITY AND AESTHETIC. CONSIDERING THE NATURAL ELEMENTS OF THE NEIGHBOURHOOD AND THEN APPLYING THEIR OWN INSIGHTS, ASPEN RIDGE BEAUTIFULLY AND EFFORTLESSLY DEFINES THE ESSENCE OF EVERY THRIVING COMMUNITY. THE RESULT IS A COLLECTION OF SPACES THAT TRULY REPRESENT EVERYONE WHO LIVES THERE.

A HISTORY OF SUCCESS IN MARKHAM AND RICHMOND HILL

PAST COMMUNITIES

Aspen Ridge Homes has a proven track record of success developing luxury low-rise communities throughout York Region. We cultivate diverse and vibrant neighbourhoods where all families call home, seamlessly blending suburban tranquility with big-city amenities. Our homes are stylish, exclusive, and original—just like our buyers.



CURRENT ASPEN RIDGE COMMUNITIES

Aspen Ridge gracefully intertwines the paths of nature and human insights to define thriving communities. Each neighbourhood's distinct identity, personality and aesthetic are beautifully captured, resulting in spaces that truly represent their residents.



AKRIDGE MEADOWS

EXQUISITE LUXURY IN A NATURAL SETTING

RICHMOND HILL

Oakridge Meadows is a collection of luxurious single family homes and townhomes in the heart of Richmond Hill's most eloquently idyllic landscape. Located just off Leslie St. and Stouffville Side Rd., this community offers incredible access to efficient transportation routes and the superb amenities of Richmond Hill.

Sales Office Open by Appointment



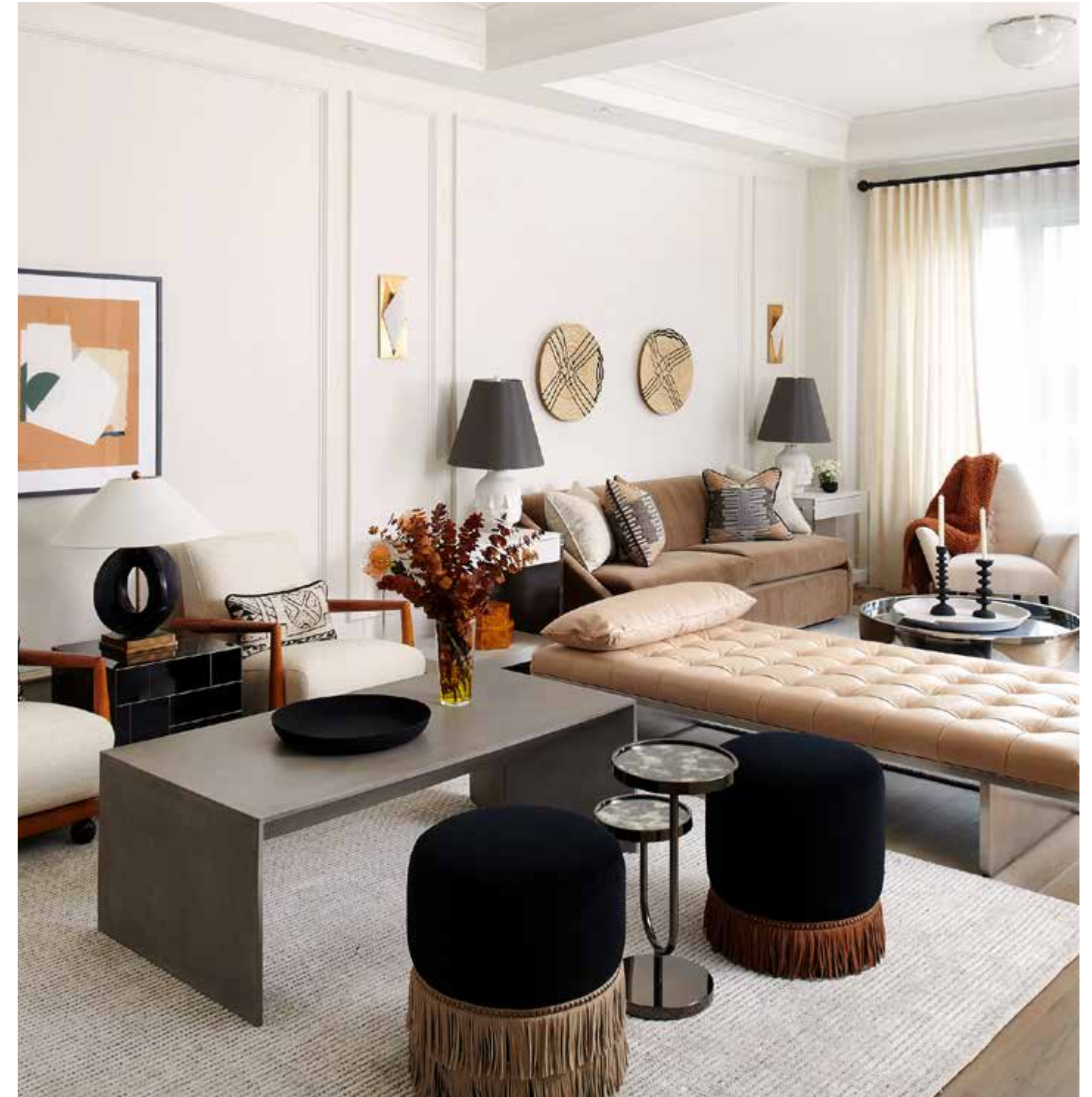
UPPER CALEDON EAST

FOLLOW YOUR PATH

CALEDON

A breathtaking community surrounded by lush nature, abundant wildlife and captivating landscapes welcomes you at Upper Caledon East. Choose from elegant single family homes ranging from 32' to 50', that seamlessly meld distinctive character with the beauty of nature.

Now Previewing





EXPERIENCE NEW KESWICK

KESWICK

Simcoe Landing, a four seasons home community in Keswick, elegantly fuses the essence of the country with the convenience and connectedness of the city. With Highway 404 at your doorstep, find yourself in Markham, Newmarket or Aurora within 30 minutes, or reach Toronto in less than an hour. Minutes from sparkling Lake Simcoe and carefree stretches of marina-dotted shoreline, the world is yours to behold at Simcoe Landing.

Sales Office Open by Appointment

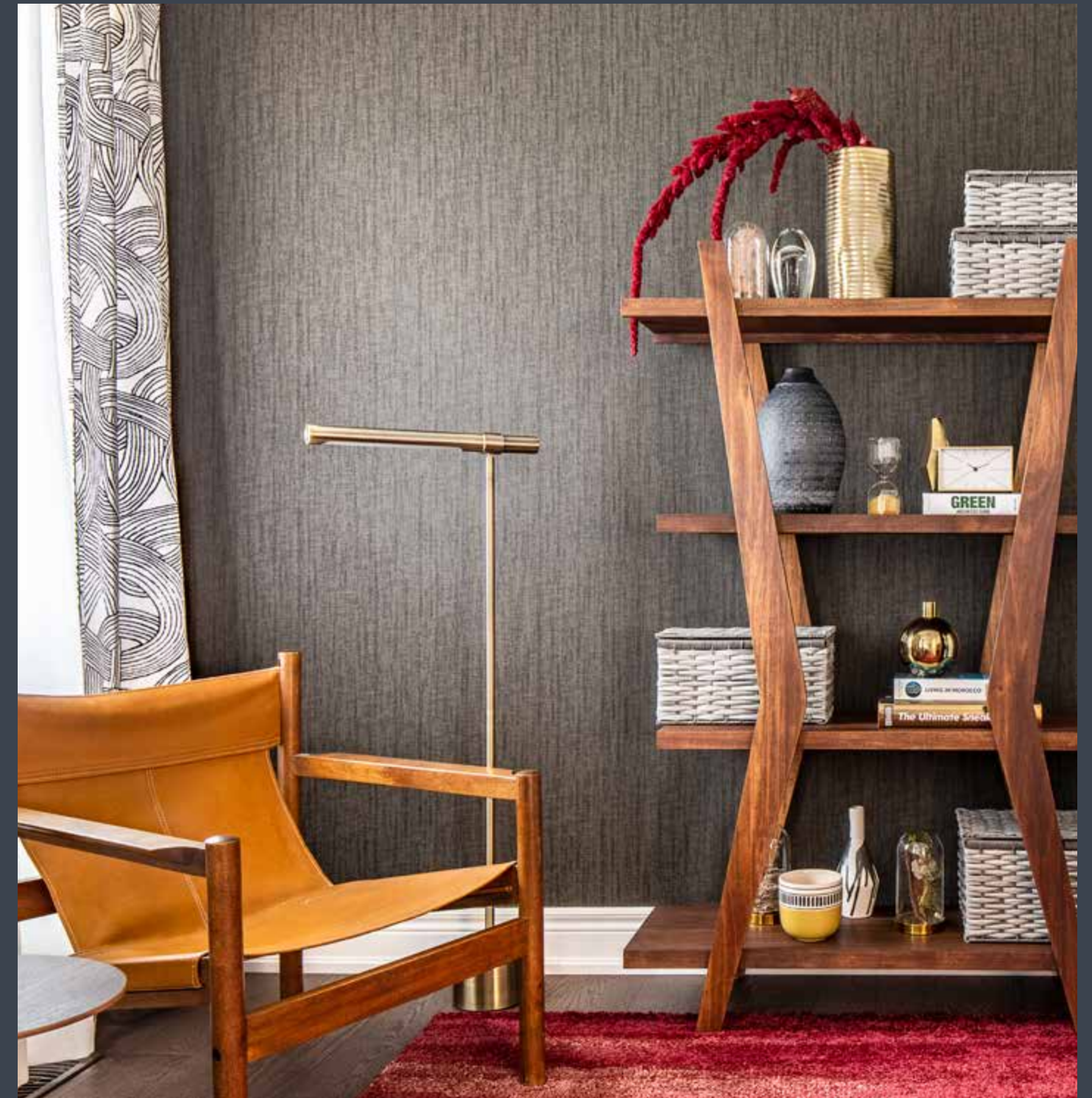


A TOWN TO CALL HOME

QUEENSVILLE

The community of Queensville has been master-planned to raise the standards of living. Discover a place where families can explore, learn, play and grow together in a safe and supportive environment.

Sales Office Open by Appointment



NEWSEATON

A VISION OF ASPIRATIONAL LIVING

PICKERING

One of the GTA's most successful new communities, New Seaton is a connected community close to highways 412, 401 and 407 and providing easy access to the GO Train. A balance of modern thinking in harmony with the natural landscape, here you'll find pedestrian friendly main streets and an extensive network of trails that meander through the preserved and unspoiled landscapes. Enjoy living, learning, working and playing in the GTA's most desirable new neighbourhood.

Register for New Release This Fall



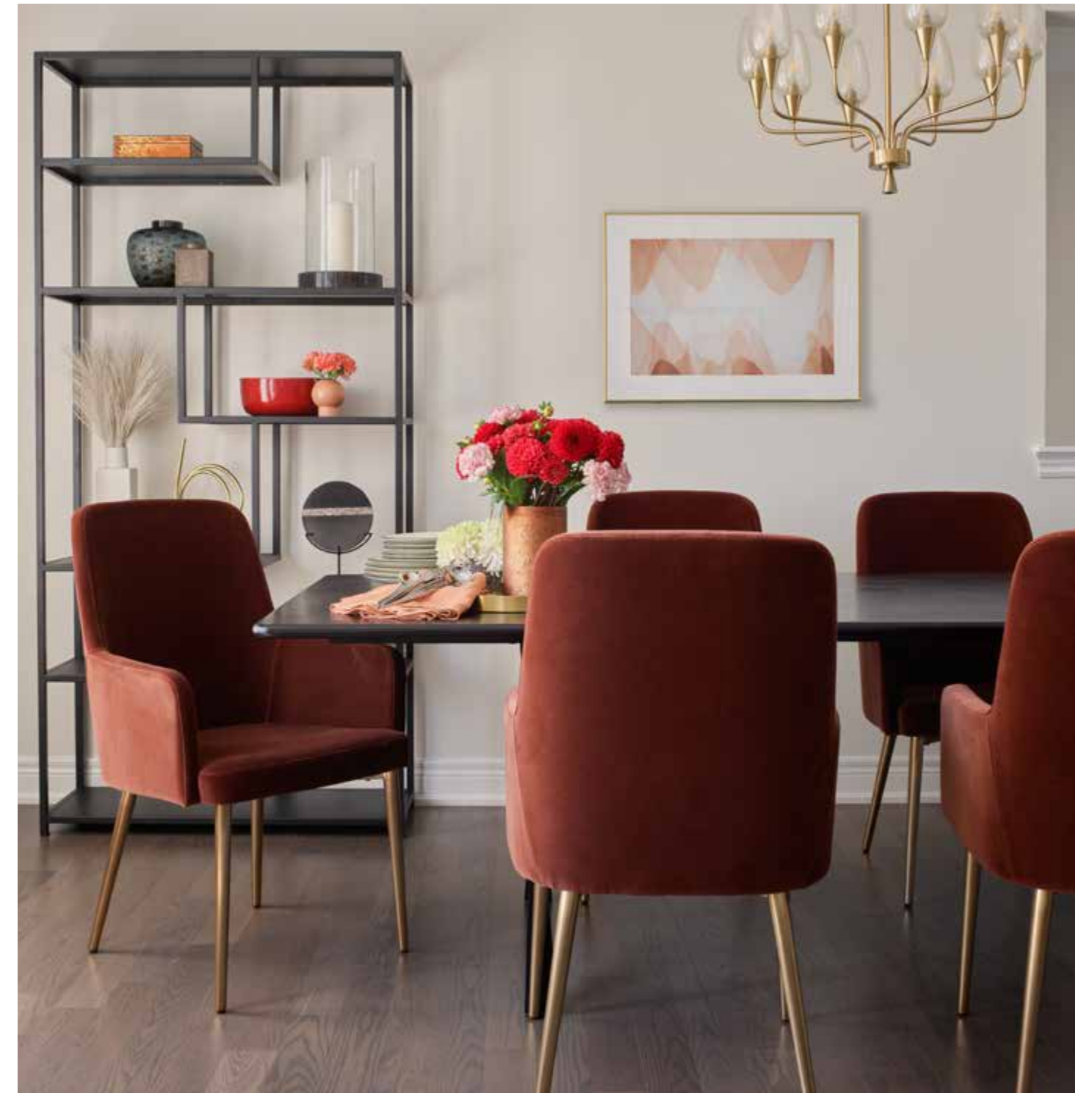
MAYFIELD VILLAGE

LIVE YOUR TRUE COLOURS

BRAMPTON

Mayfield Village is now home to over a thousand families. In this successful master-planned community by Aspen Ridge, inviting streetscapes create a modern look while still retaining the charm of the area's small-town past. This pedestrian-oriented community has a decidedly urban feel, and every home is within walking distance of Brampton Transit service.

New Release Coming Soon



CROSTOWN™

Live, Work, PLAY AND THRIVE.

TORONTO

Toronto's largest new redevelopment with 60 acres of space to live, work, play and thrive rises at Eglinton and Don Mills. Discover Toronto's largest park system and exciting new community centre, and stay connected with the new Eglinton Crosstown LRT — just steps from your front door. Five buildings have already launched, with a new mid-rise building and townhomes coming fall 2023.

Sales Office Opening October 2023.
Register for More Information at CrosstownCommunity.ca.





THE ESSERY

HERITAGE RESIDENCES

1887

COVETED BOUTIQUE LIVING

TORONTO

Steeped in history and melded with new architecture rises a bright new Aspen Ridge Community, The Essery. With a remarkable array of restaurants, bars and parkland minutes from your front door, The Essery is where Toronto truly feels like home..

Sales Office Open by Appointment



PAST COMMUNITIES
HIGHRISE



Crowning the top of midtown Toronto, a silent revolution is taking place. An elevated living experience inspired by the past, transforming the future. Featuring elegant interiors and a lifestyle reserved for those who appreciate having the world at their doorstep.

Completed 2021



STUDIO

It's Richmond. Richmond & Duncan. Steps from the Shangri-La in the heart of Toronto. These two towers, with a common podium, OCAD gallery and townhomes at their base, transformed Richmond Street and welcomed over 700 new condo owners.

Completed 2018



SEVENTY SEVEN
CHARLES YORKVILLE

Picture a distinctive address on the quiet side of Yorkville proper. This singular landmark building, with impeccable customized suite interiors, makes a statement in muted opulence, spoken in the language of subtle sophistication that only a precious few will call home.

Completed 2018



VIBRANT
LUXURY LIVING
BLOOMS
IN MARKHAM



VICTORIA GRAND
MARKHAM

WELCOME TO VICTORIA GRAND,
AN INNOVATIVE NEW COMMUNITY
OF ELEGANT LUXURY HOMES AT
WARDEN AVENUE AND ELGIN MILLS
ROAD EAST IN MARKHAM.

Offering a wide range of transitional and modern-style townhomes and single family homes, Victoria Grand is a thoughtfully designed, master-planned community with exquisitely crafted architecture and design. Discover everything you need for a vibrant life, surrounded by beautiful streetscapes and state-of-the-art facilities, with access to outstanding area amenities close to home.

LUXURY *DETACHED* SINGLES

30' & 38' SINGLE FAMILY HOMES

VICTORIA GRAND SINGLE FAMILY HOMES FULFILL YOUR ASPIRATIONS TO LIVE IN A SPACIOUS NEW HOME WHERE EVERYTHING HAS BEEN DESIGNED AROUND YOUR NEEDS.

Each home displays a grand harmony of the modern and the traditional, with warm, natural brick walls, peaked roofs, and architectural details that create a feeling of welcome and familiarity.

For full product lineup, please visit sales office representative or Aspenridgehomes.com



38' CARPENTER Elev. A



30' NURSE Elev. B

TOWNHOME *LIVING*

15' & 20' TOWNHOMES

OFFERING THE PRIVACY AND SPACE OF MULTI-LEVEL LIVING,
THE TOWNHOMES AT VICTORIA GRAND FEATURE COMFORTABLE,
EFFICIENT LAYOUTS THAT SUIT YOUR LIFESTYLE.

Clad in natural brick in two complementary colours inspired by nature, each 15' and 20'
townhome block has a private entryway and three floors of luxurious living space.

For full product lineup, please visit sales office representative or
Aspenridgehomes.com



20' TOWNHOME Elev. A

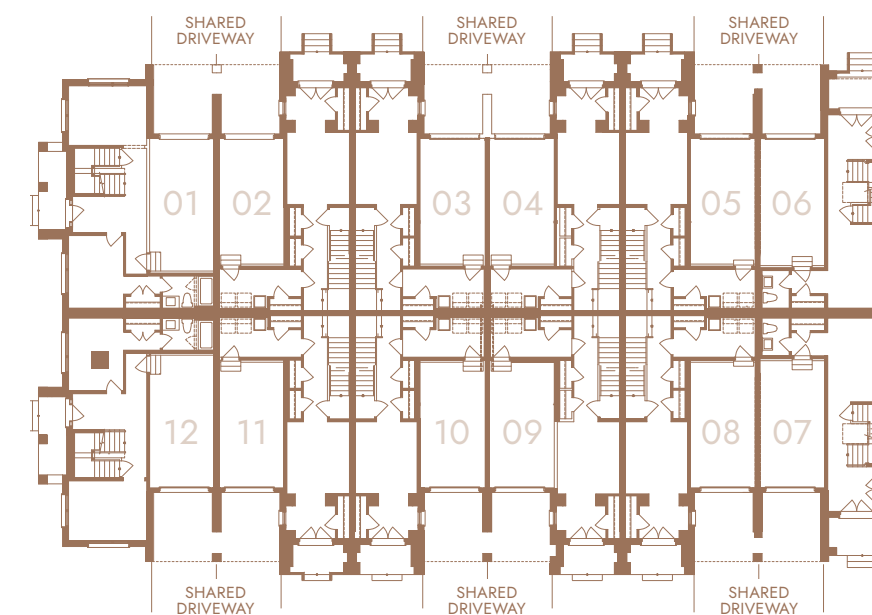
BACK TO BACK 23' TOWNHOMES

DESIGNED TO OPTIMIZE SPACIOUSNESS AND CONVENIENCE, THE BACK-TO-BACK TOWNHOMES ARE 23' WIDE, WITH PRIVATE BALCONIES FOR ENJOYING THE OUTDOORS.

Each one of these luxurious three-storey homes has its own garage entryway, accessed via a driveway from the street.

For full product lineup, please visit sales office representative or Aspenridgehomes.com

Overhead view of back-to-back towns



23' TOWNHOME Elev. C

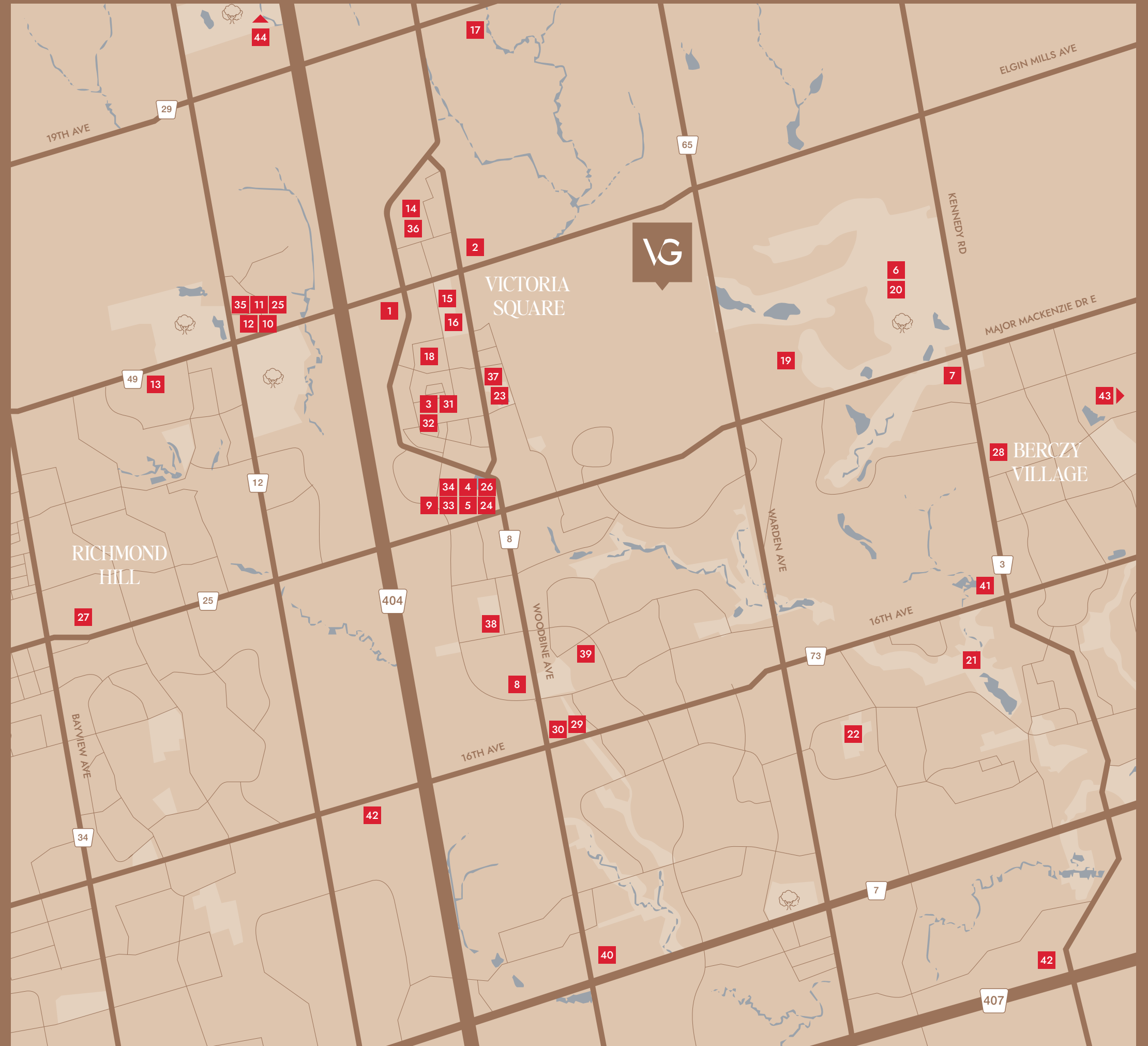


LIFE *BLOSSOMS* IN MARKHAM

MULTIPLICITY OF CHOICE

LOCAL AMENITIES

Envision the ideal community, and it would likely look a lot like Victoria Grand — connected, convenient, smart, and green. Nestled in a northern corner of Markham, this community offers easy access to a myriad of area amenities for every age, from shopping, to dining, to schools, to recreation venues and parks.



FOOD & DRINKS

1. Tim Hortons
2. Baker House Bread Inc.
3. Cafe Mozaiko
4. Subway
5. Starbucks
6. The Silo Grill at Angus Glen
7. Wild Wing
8. Sushi Taro
9. Kingsfield Chinese Cuisine
10. Astoria Shish Kebab House
11. Salad Bar Co.
12. Chatime
13. Akimi Japanese Cuisine

RECREATION & ENTERTAINMENT

14. William Cantley Park
15. Victoria Square Park
16. Cathedral (King David) Park
17. Fletcher's Fields
18. Crescent Park
19. Gordon Stollery Park
20. Angus Glen Golf Club
21. Toogood Pond Park
22. Carlton Park
23. Vine Cliff Park

SHOPPING

24. Cachet Village Mall
25. Costco
26. Shoppers Drug Mart
27. SmartCentres Richmond Hill
28. Berczy Village Shopping Centre
29. Cachet Centre
30. Sport Chek

HEALTH & PERSONAL CARE

31. Salon 77 Hair Design
32. Rean Brow Shop
33. Vanessa Nail Bar
34. Markland Dental Centre
35. Orangetheory Fitness

SCHOOLS

36. Victoria Square Public School
37. Sir Wilfrid Laurier Public School
38. Lincoln Alexander Public School
39. St. Augustine Catholic High School
40. Seneca Polytechnic College
41. Unionville College
42. Angus Glen Montessori
43. Victoria Square Montessori School

TRANSIT

44. Unionville GO
45. Mount Joy GO
46. Bloomington GO

MARKHAM'S MAGIC

MARKHAM LIVING



ONE OF THE MOST DIVERSE CITIES IN CANADA, MARKHAM IS ALSO HOME TO A RICH ARTS AND CULTURE SCENE, AS WELL AS TOP-RATED SCHOOLS, HIGH-TECH COMPANIES, HISTORIC HOMES, AND NATURAL WONDERS. EXPLORE THIS GROWING CITY AND ITS DYNAMIC ATTRACTIONS, ITS CONTEMPLATIVE OUTDOOR SPACES, AND ITS UNIQUE ATMOSPHERE.



- 1 Kingsfield Chinese Cuisine
- 2 Annual Markham Fair
- 3 Historic downtown Unionville
- 4 Varley Art Gallery

SCHOOLS OF THOUGHT

EDUCATIONAL INSTITUTIONS

ONE REASON MARKHAM IS AN IDEAL PLACE TO RAISE A FAMILY IS ITS HIGHLY RATED SCHOOLS FOR KIDS FROM JUNIOR KINDERGARTEN TO GRADE 12 – INCLUDING FRENCH IMMERSION PUBLIC SCHOOLS AND MONTESSORI SCHOOLS CLOSE TO HOME. THESE CENTRES OF LEARNING ARE GEARED TO GIVING CHILDREN A SOLID ACADEMIC FOUNDATION, AS WELL AS FOSTERING THE SOCIAL SKILLS THEY NEED TO SUCCEED IN LIFE.

Victoria Square Montessori School
10137 Victoria Square Blvd.

Angus Glen Montessori
10000 Kennedy Rd.

Victoria Square Public School
50 Prince of Wales Dr.

Sir Wilfrid Laurier Public School
160 Hazelton Ave.

Lincoln Alexander Public School
38 Hillmount Rd.

St. Augustine Catholic High School
2188 Rodick Rd.

Seneca Polytechnic College (Markham Campus)
8 The Seneca Way

Unionville College
4486 16th Ave

DUAL TRACK FRENCH IMMERSION

Dual track means that some schools offer French immersion programs as well as English-only programs. To start your little ones off learning French from a young age, you can enroll them in the **Victoria Square Public School** French immersion program for grades 1 and 2. For grades 3 to 8, they would then attend **Sir Wilfred Laurier Public School** for its French immersion. Victoria Square Public School also has an English program for kindergarten to grade 8.

MONTESSORI SCHOOLS

Located on the site of an 1877 schoolhouse and surrounded by trees, **Victoria Square Montessori School** aims to develop strong academic learning with a focus on reading, writing and math. Children are encouraged to become independent and acquire good social and interpersonal skills. **Angus Glen Montessori** offers care, nurturing and learning through programs for infants to 12-year-olds that are aimed at your child's needs and abilities.



COMMUNITY *FEEL*

COMMUNITY CENTRES



THE ANGUS GLEN COMMUNITY CENTRE AND LIBRARY IS A HUB SERVING MARKHAM'S FLOURISHING AND DIVERSE COMMUNITIES.

The state-of-the-art facility boasts a range of family-friendly amenities, including two NHL-size arenas with spectator seating for 450, a swimming pool, a double gymnasium, and a library. The centre is committed to ensuring your grandparents and aging relatives are active and engaged, with unique events including Chair Yoga and programming for Mandarin-speaking seniors.



ANGUS GLEN
COMMUNITY CENTRE & LIBRARY



OTHER NEARBY COMMUNITY CENTRES:

- Aaniin Community Centre
- Cornell Community Centre
- Armadale Community Centre
- Milliken Mills Community Centre
- Markham Pan Am Centre

MAKING THE CONNECTION

TRANSIT & CONNECTIVITY

GOING PLACES OR HEADING HOME, YOU'LL BE DELIGHTED BY HOW EFFORTLESS IT IS TO GET WHERE YOU NEED TO GO.



MINUTES TO HIGHWAY 404 & 407

Victoria Grand is conveniently located only a few minutes from Highway 404, the direct route into downtown Toronto for work, entertainment or sporting events. For other destinations, the 404 easily connects with the 401 and 407.

TRANSIT

To connect to the TTC subway system, take the YRT bus 24 from Victoria Square all the way to Don Mills station. This bus also connects with the Highway 7 Viva bus system.

GO TRANSIT

Bloomington GO Train Station
Perhaps the most convenient and efficient way to travel through the GTA is to drive 12 minutes from Victoria Grand to the Bloomington Go Station, park in the lot there, and take the Go train south into Toronto.

Mount Joy GO Train Station
Alternatively, you can drive the 12 minutes from Victoria Grand to the Mount Joy Go Transit station and take the Stouffville line into Toronto.



PEAK PARK EXPERIENCES

GREEN SPACES & PARKS



FROM SPRING BLOSSOM TIME TO FALL COLOURS, NATURE ALWAYS PUTS ON A SHOW FOR THOSE WHO VENTURE OUT FOR A HIKE, RUN, OR WALK WITH THE DOG. INTRODUCE THE KIDS TO NATURE — IT'S ALL AROUND YOU AT VICTORIA GRAND. PARKS AND GREEN SPACE ARE NEVER FAR AWAY, OFFERING ENDLESS WAYS TO RELAX AND REINVIGORATE OUTDOORS.

JEFFERSON FOREST

Take highway 404 north four kilometres and drive east on Stouffville Road to this fantastic natural wooded area that is part of the Oak Ridges Corridor Conservation Reserve. You can hike the loop trail or make it a longer day and connect to other trails in the reserve.



1 Jefferson Forest trail
2 Rouge National Urban Park

ROUGE NATIONAL URBAN PARK

The grandest naturalized urban park of them all, the Rouge begins at Lake Ontario and goes north all the way to Uxbridge. There are many access points to this spectacular park along the way — including Elgin Mills Rd. and Reesor Rd. Explore the Rouge and see if you can spot any of its more than 1,000 plant species, 247 bird species, 73 fish species, 44 mammal species, and 27 reptile and amphibian species.

GREEN SPACES & PARKS



1

VICTORIA SQUARE PARK

Close to home, this expanse of grass beside the Victoria Square Community Centre has a baseball diamond, splash pad and playground, multipurpose trails, and the Arboretum & Heritage Orchard.

RICHMOND GREEN SPORTS CENTRE & PARK

What sports do you love? Soccer, basketball, baseball, inline skating, ice skating? Chances are, you'll be able to play them here. Comprising a 26,000 square-foot indoor sports centre and a vast outdoor park full of sports and activity venues, this sports park has it all. This is also a prime spot where Canada Day celebrations and fireworks take place.



2

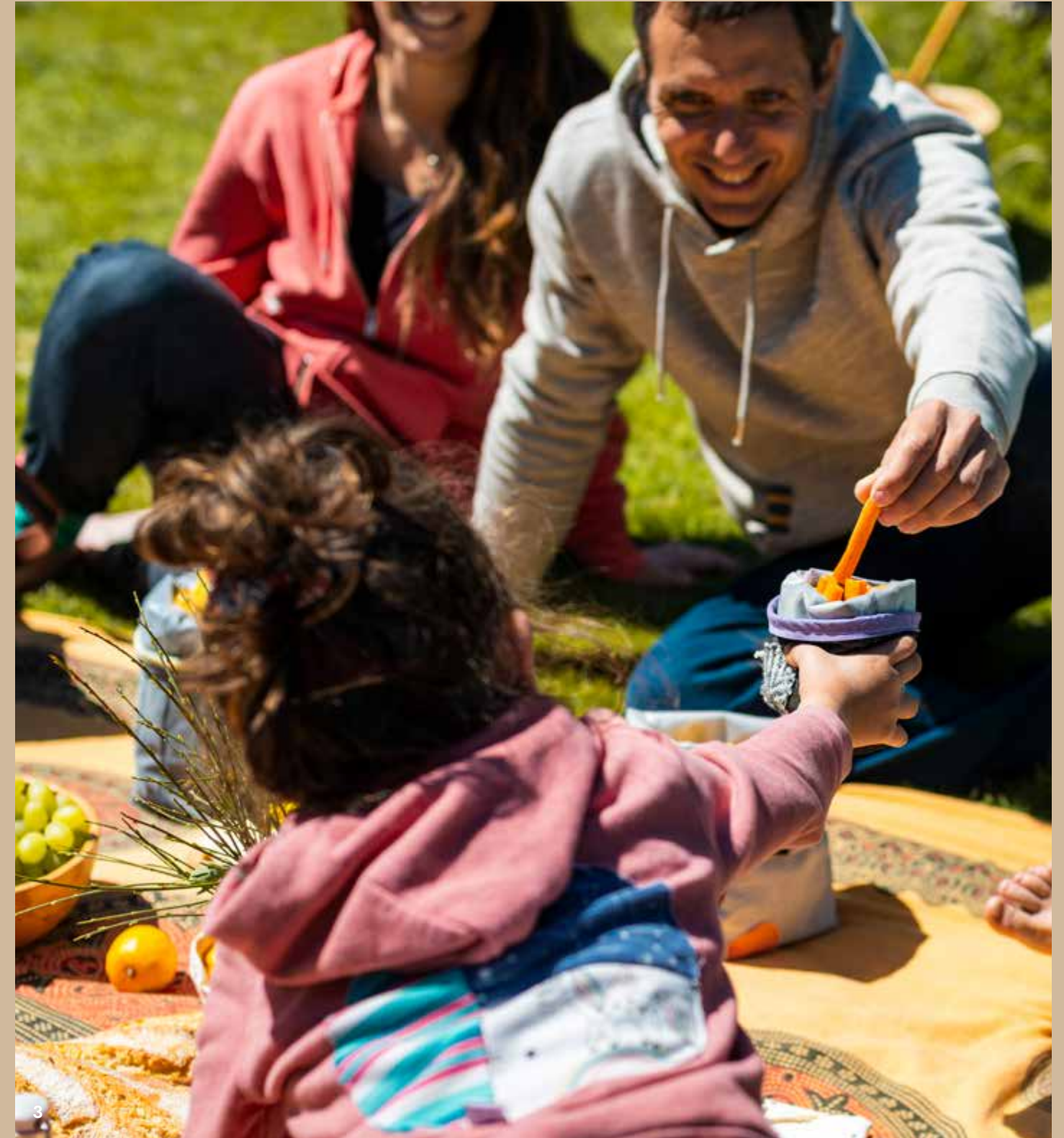
LAKE WILCOX PARK

A popular spot with locals, this park surrounds the lake, with a waterfront promenade and boardwalk, a splash pad, a playground, and a skate park. Its self-guided tree tour is a great way to learn about 20 of the tree species native to southern Ontario and how they benefit the community.

- 1 Victoria Square Park
- 2 Lake Wilcox Park
- 3 Bruce Mills Conservation Area

BRUCE'S MILL CONSERVATION AREA

This park just north of Victoria Grand has something for everyone, including treetop trekking, a BMX course, hiking trails, and even a driving range. In the spring the Sugarbush Maple Syrup Festival makes a sweet retreat for the family, and summertime is the right time for taking advantage of any of the 22 picnic sites.



3

GOLFER'S PARADISE

GOLF COURSES

MARKHAM IS A GOLFER'S PARADISE, WITH MORE THAN A DOZEN CLUBS ONLY A FEW MINUTES' DRIVE AWAY. REVEL IN THE CHANCE TO PLAY EVERY HOLE AT EVERY COURSE, OR DECIDE TO MAKE ONE OF THESE CONVENIENT GOLF VENUES YOUR HOME BASE.

ANGUS GLEN GOLF CLUB

Victoria Grand is just a stone's throw from this premier club that offers unique and challenging play for everyone from beginners to advanced strategists. There are two spectacular 18-hole championship courses for players to choose from: the North Course and the South Course. The North Course hosted a PGA tour event in 2007, but don't let that intimidate you if you're a novice – each hole has four sets of tee blocks for varying skill levels. The South Course hosted the 2002 Canadian Open, and was completely renovated in 2015 by award-winning golf architectural firm MacKenzie & Ebert.

Angus Glen Golf Club is open to the public, and also offers memberships that provide access to discounts and perks. Whether you're a member or not, you're always welcome to drop by the Clubhouse where the Silo Grill features a fresh seasonal menu with locally sourced ingredients. The Sunday brunch buffet at the Clubhouse is also a not-to-be missed meal that will help power you through the day's play.

OTHER NEARBY GOLF COURSES

- Maple Downs Golf & Country Club
- Summit Golf & Country Club
- Diamondback Golf Club
- Station Creek Golf Club
- Meadowbrook Golf Club
- Spring Lakes Golf Club

1 Angus Glen Golf Course



SHOPPING SPREE

SHOPPING & RETAIL

IN THE REALM OF RETAIL, VICTORIA GRAND GIVES YOU THE BEST OF URBAN AND RURAL. THROUGHOUT THE GROWING SEASON, FRESH PRODUCE IS AVAILABLE DIRECT FROM THE FARMS THAT SURROUND MARKHAM. AND ALL YEAR ROUND, SHOPPING MALLS AND SUPERMARKETS MAKE IT EASY TO FIND EXACTLY WHAT YOU'RE LOOKING FOR. TAKE A BREAK FROM ONLINE SHOPPING AND VISIT THE RANGE OF RETAILERS THAT ADD TO THE SPICE OF LIFE.

CF MARKVILLE SHOPPING CENTRE

This spacious and spotless shopping centre boasts many of your favourite retailers, as well as some new intriguing shops such as Mumuso, Kiokii and... Inc., and Decathlon.

CF MARKVILLE TOP SHOPS & SERVICES

- Apple
- Aritzia
- Banana Republic
- Best Buy
- Browns
- Coach
- Decathlon Sporting Good
- Goodlife Fitness
- Hudson's Bay
- Laline
- Lululemon Athletica
- Lukfook Jewellery
- Marshalls
- Michael Kors
- Mumuso Kiokii
- Nike
- Oak + Fort
- Porsche Centre Markham
- Roots
- Saint Germain Bakery
- Sephora
- Sporting Life
- Winners
- Zara
- UNIQLO



SHOPPING & RETAIL



T&T SUPERMARKET – WARDEN STORE

All the flavours of Asia come together under one roof at this food store that offers fresh produce, packaged goods, and authentic prepared foods in the T&T Kitchen and the T&T Bakery.

19TH AVENUE FARMERS MARKET

Owned and run by the De Filippis family since the 1960s, this expansive open-air market at their farm offers fresh fruit, vegetables, flowers and herbs – making it easy to eat local.



A FLOWERING OF CULTURE

HISTORIC MARKHAM & UNIONVILLE

AS IT GROWS TOWARDS A SUSTAINABLE FUTURE, MARKHAM WILL CONTINUE TO RETAIN ITS CONNECTIONS TO CULTURE, HISTORY, ART AND SOCIETY – EVERYTHING PEOPLE VALUE AND TREASURE.



UNIONVILLE MAIN STREET

This incredible boulevard boasts stunningly preserved historic buildings housing charming bistros, breweries, boutiques, and bakeries. Spend a day strolling along browsing and sampling, and top it off with a visit to the art gallery or TooGood Pond Park.



- 1 Unionville Main Street
- 2 Old Firehall Confectionary
- 3 Starbucks on Main Street



HISTORIC MARKHAM & UNIONVILLE



VARLEY ART GALLERY OF MARKHAM

With rotating art exhibitions that showcase local and Canadian artists, art camps for kids, and art classes for all ages, this cultural hub inspires you to engage with art. The art gallery was named after F. H. Varley, a founding member of the Group of Seven.

MARKHAM MUSEUM

Located on 25 acres of parkland, this museum features more than 20 historic buildings on site. It's an amazing place to learn about the history of the area, and imagine what it was like to live back in the early days of Markham.



- 1 Varley Art Gallery
- 2 Markham Museum
- 3 Flato Theatre

FLATO MARKHAM THEATRE

There's nothing like live theatre, and Markham has its very own theatrical venue with seating for more than 500. Plays, dance performances, magic shows and concerts from a diversity of entertainers bring a feast for your senses.

HISTORIC MARKHAM & UNIONVILLE



MARKHAM FAIR

Taking place at the end of September, the Markham Fair is a chance to bask in everything rural and agricultural while also enjoying entertaining spectacles such as the demolition derby, fireworks, and concerts. It's the perfect event for the whole family. (Grown-up tip: There's a wine tent.)





VICTORIA GRAND

ASPENRIDGE



ASPENRIDGE®